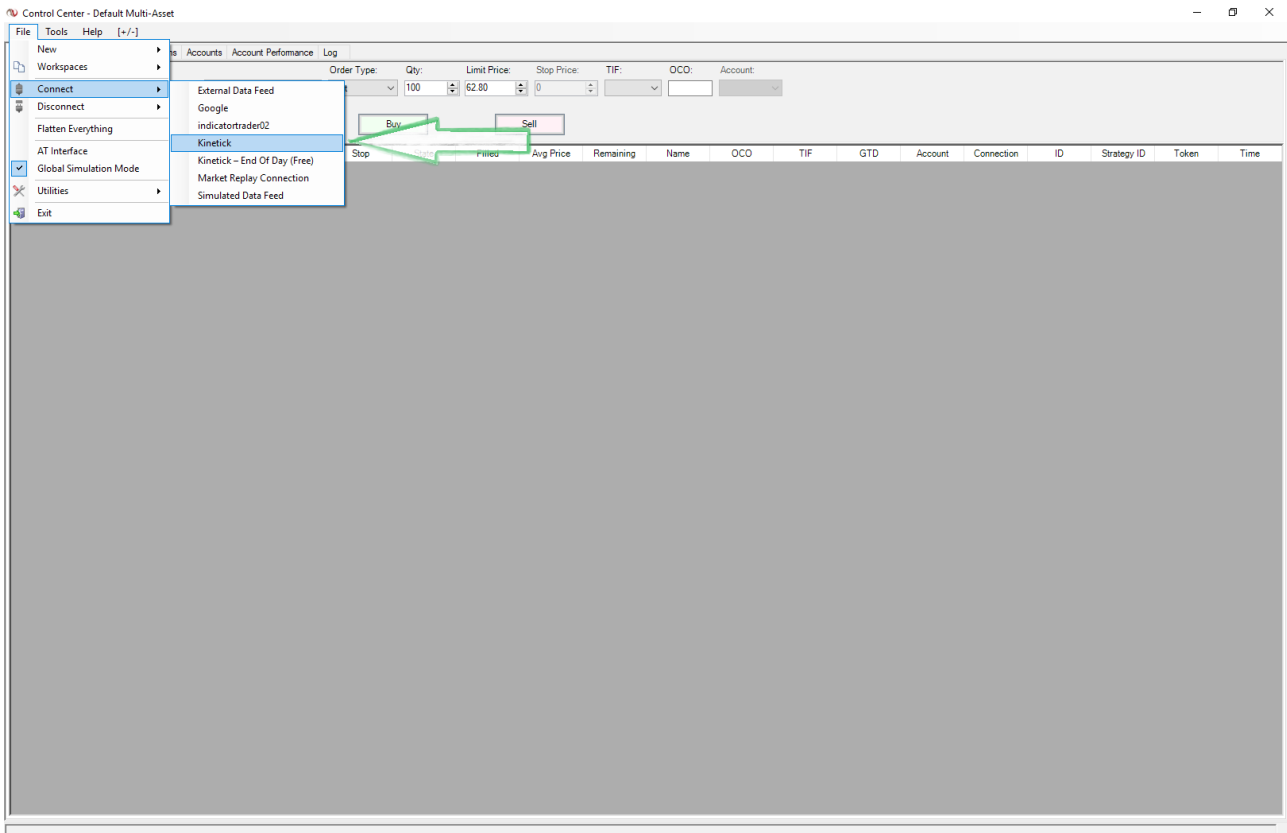
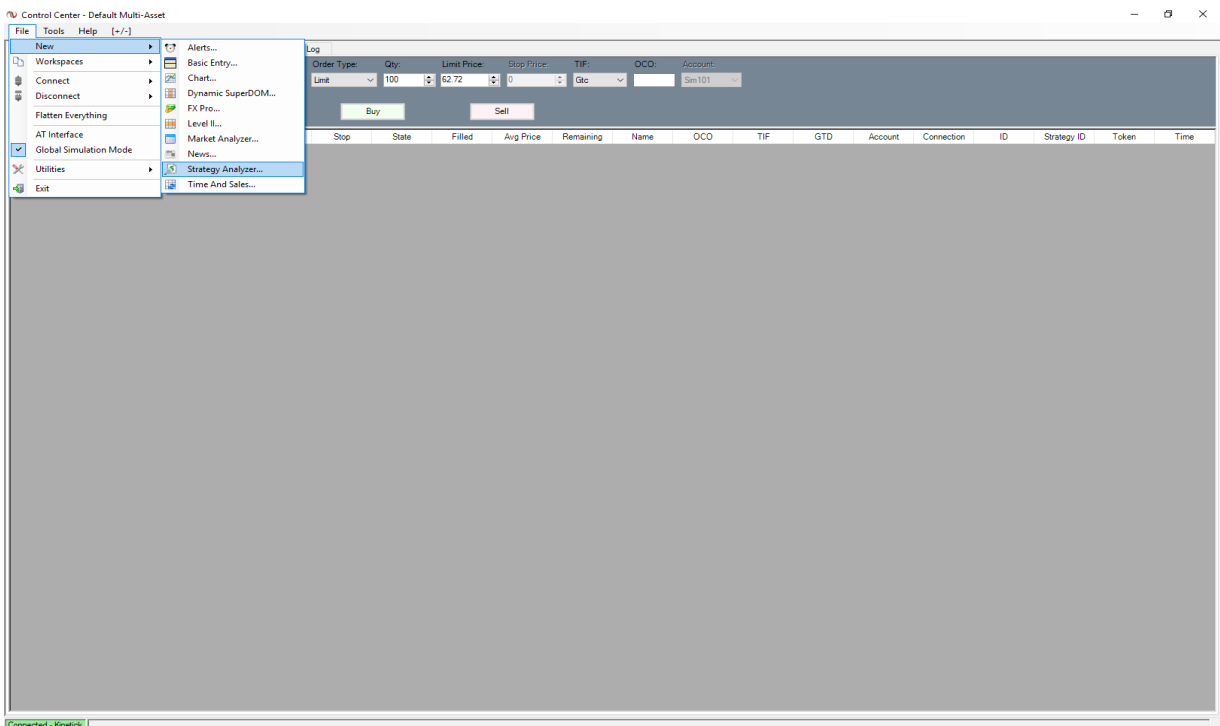


Hello,
this time i want show you the backtest function of NinjatTrader on stock chart.



first step,connect your NinjatTrader on a data feed what can offer Stockdata
in my case is this kinetic.

After open the strategy analyzer



Strategy Analyzer

Percent

Summary Chart Graphs Executions Trades Periods Orders Settings

Performance	All Trades	Long Trades	Short Trades
Total Net Profit	\$0.00	\$0.00	\$0.00
Gross Profit	\$0.00	\$0.00	\$0.00
Gross Loss	\$0.00	\$0.00	\$0.00
Commission	\$0.00	\$0.00	\$0.00
Profit Factor	1.00	1.00	1.00
Cumulative Profit	0.00%	0.00%	0.00%
Max. Drawdown	0.00%	0.00%	0.00%
Sharpe Ratio	1.00	1.00	1.00
Start Date 13.04.2006			
End Date 13.04.2006			
Total # of Trades	0	0	0
Percent Profitable	0.00%	0.00%	0.00%
# of Winning Trades	0	0	0
# of Losing Trades	0	0	0
Average Trade	0.00%	0.00%	0.00%
Average Winning Trade	0.00%	0.00%	0.00%
Average Losing Trade	0.00%	0.00%	0.00%
Ratio avg. Win / avg. Loss	0.00	0.00	0.00
Max. consec. Winners	0	0	0
Max. consec. Losers	0	0	0
Largest Winning Trade	0.00%	0.00%	0.00%
Largest Losing Trade	0.00%	0.00%	0.00%
# of Trades per Day	0.00	0.00	0.00
Avg. Time in Market	0.0 min	0.0 min	0.0 min
Avg. Bars in Trade	0.0	0.0	0.0
Profit per Month	0.00%	0.00%	0.00%
Max. Time to Recover	0.00 days	0.00 days	0.00 days
Average MAE	0.00%	0.00%	0.00%
Average MFE	0.00%	0.00%	0.00%
Average ETD	0.00%	0.00%	0.00%

Now you can see the Strategy analyzer off NinjaTrader.

With this tool you can test fast many instruments I use my strategy IndicatorTrader strategy

I made here an example i put all SP500 stocks with the initial letter A in the default list.

Now i begin running backtest.

Strategy Analyzer

Percent

Summary Chart Graphs Executions Trades Periods Orders Settings

Performance	All Trades	Long Trades	Short Trades
Total Net Profit	\$0.00	\$0.00	\$0.00
Gross Profit	\$0.00	\$0.00	\$0.00
Gross Loss	\$0.00	\$0.00	\$0.00
Commission	\$0.00	\$0.00	\$0.00
Profit Factor	1.00	1.00	1.00
Cumulative Profit	0.00%	0.00%	0.00%
Max. Drawdown	0.00%	0.00%	0.00%
Sharpe Ratio	1.00	1.00	1.00
Start Date 13.04.2006			
End Date 13.04.2006			
Total # of Trades	0	0	0
Percent Profitable	0.00%	0.00%	0.00%
# of Winning Trades	0	0	0
# of Losing Trades	0	0	0
Average Trade	0.00%	0.00%	0.00%
Average Winning Trade	0.00%	0.00%	0.00%
Average Losing Trade	0.00%	0.00%	0.00%
Ratio avg. Win / avg. Loss	0.00	0.00	0.00
Max. consec. Winners	0	0	0
Max. consec. Losers	0	0	0
Largest Winning Trade	0.00%	0.00%	0.00%
Largest Losing Trade	0.00%	0.00%	0.00%
# of Trades per Day	0.00	0.00	0.00
Avg. Time in Market	0.0 min	0.0 min	0.0 min
Avg. Bars in Trade	0.0	0.0	0.0
Profit per Month	0.00%	0.00%	0.00%
Max. Time to Recover	0.00 days	0.00 days	0.00 days
Average MAE	0.00%	0.00%	0.00%
Average MFE	0.00%	0.00%	0.00%
Average ETD	0.00%	0.00%	0.00%

Backtest

Strategy: IndicatorTrader

Period_1: IndicatorTraderV3

Period_2: SampleStrategy

Period_EMA: SampleMACrossOver

Period_HMA: SampleMultiTimeFrame

Bars_Sink_Entry: 3

Enable_Reversal: False

Max_Daily_Loss: 15000

Max_Daily_Profit: 50000

Pos_BE_Ticks: 12000

Pos_Stop_Ticks: 20000

Pos_Target_Ticks: 25000

Pos_Trade_Size: 10

Time_Begin_HHMMSS: 0

Time_Finish_HHMMSS: 0

Data series: Last

Price based on: Last

Type: Minute

Value: 60

Time frame: From 01.10.2018 To 25.10.2018

Session template: <Use instrument settings>

General: Include commission: False; Label: IndicatorTrader; Maximum bars look ba: 1; TickInterval: FiftySix; Min. bars required: 20

Historical Fill Processing: Fill type: Default; Slippage: 0

Order Handling: Entries per direction: 1; Entry handling: UniqueEntries; Exit on close: False

Order Properties: Set order quantity: by strategy; Time in force: Gtc

Label: Enter the description of your strategy here

Run Backtest

choose in the backtestmenu Indicatortraderstrategy

Now you can insert my parameter or analyse charts at your own to find out the best working parameter for the Stock

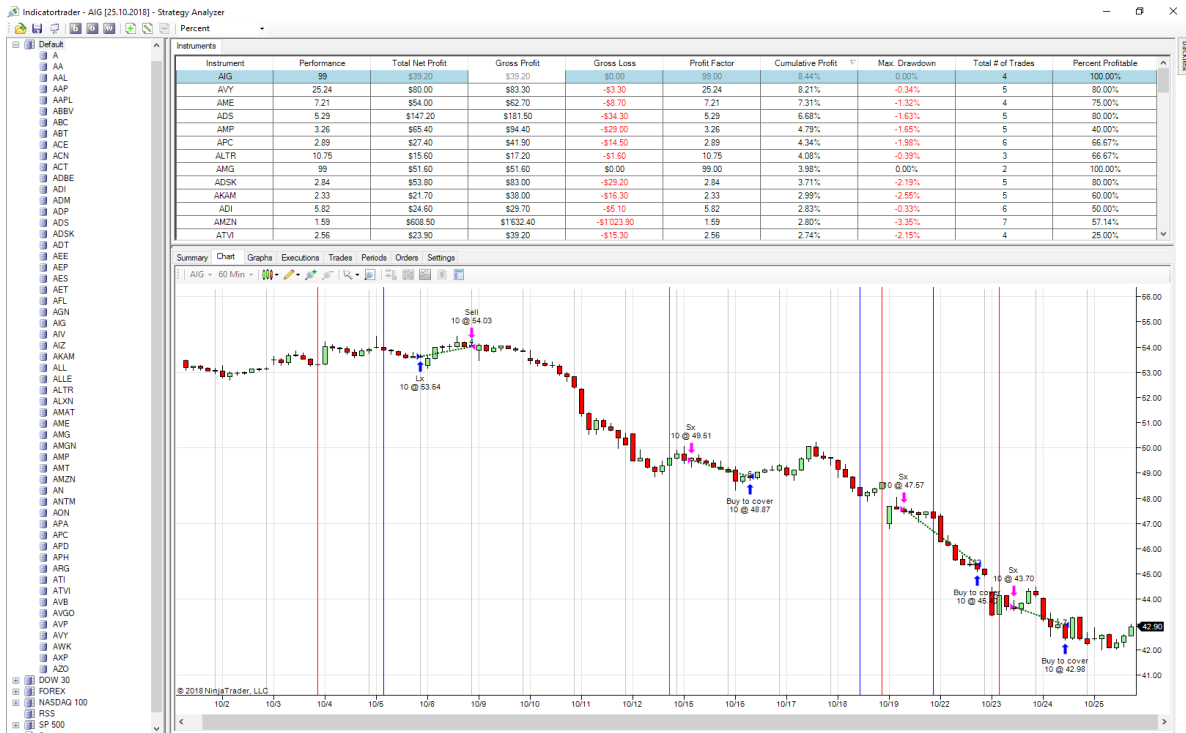
Push the button Run Backtest!

The screenshot shows the Strategy Analyzer application. The main window displays a summary table with columns for 'Performance', 'All Trades', and 'Long Trades'. The 'Backtest' panel on the right contains several sections: 'Parameters' (Period_1: 20, Period_2: 100, Commission: 100, etc.), 'Strategy Parameters', 'Data series', 'Time frame', 'General', 'Order Handling', and 'Order Properties'. A yellow arrow points to the 'Run Backtest' button at the bottom right of the interface.

NinjaTrader download the necessary data and in a couple of seconds show you the result.

If you click on cumulative profit you refresh the list and the best performing stocks are on the top

The screenshot shows the Strategy Analyzer application with a list of instruments. The columns include 'Instrument', 'Performance', 'Total Net Profit', 'Gross Profit', 'Gross Loss', 'Commission', 'Profit Factor', 'Cumulative Profit', 'Max. Drawdown', 'Total # of Trades', and 'Percent Profitable'. A yellow arrow points to the 'Cumulative Profit' column header, indicating that clicking it will refresh the list to show the best performing stocks at the top.



In the riter Chart you see the trades made by the strategy connected with a green or red line you can see the profit on the top of the concluding trade arrow so you can set up the right ordersize for your portfolio.

I wish you anytime nice trades

Regards

Gabriel Coletta